

# HALO

FINZELS REACH BRISTOL

## FLOOR PLANS



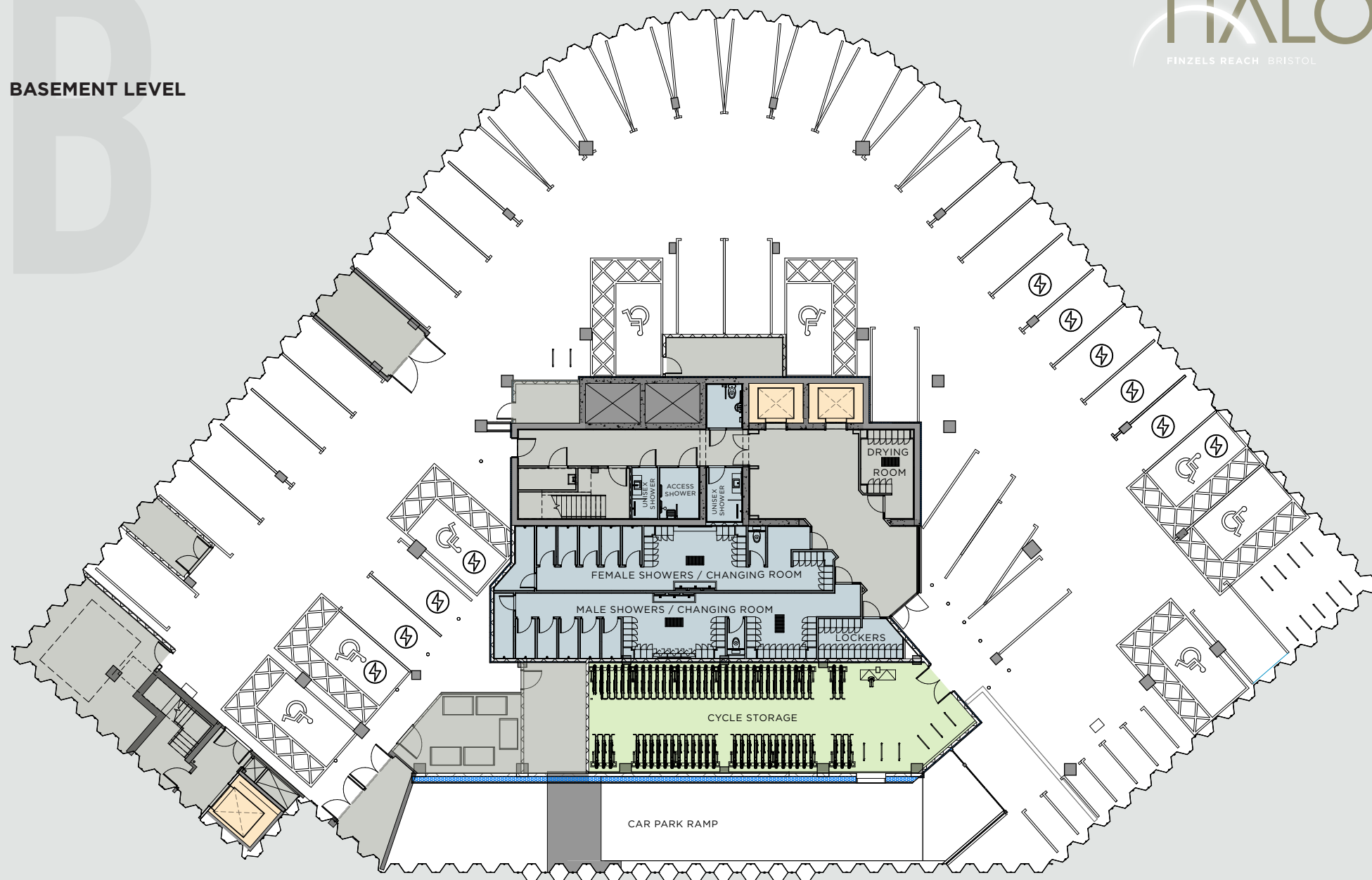






# B

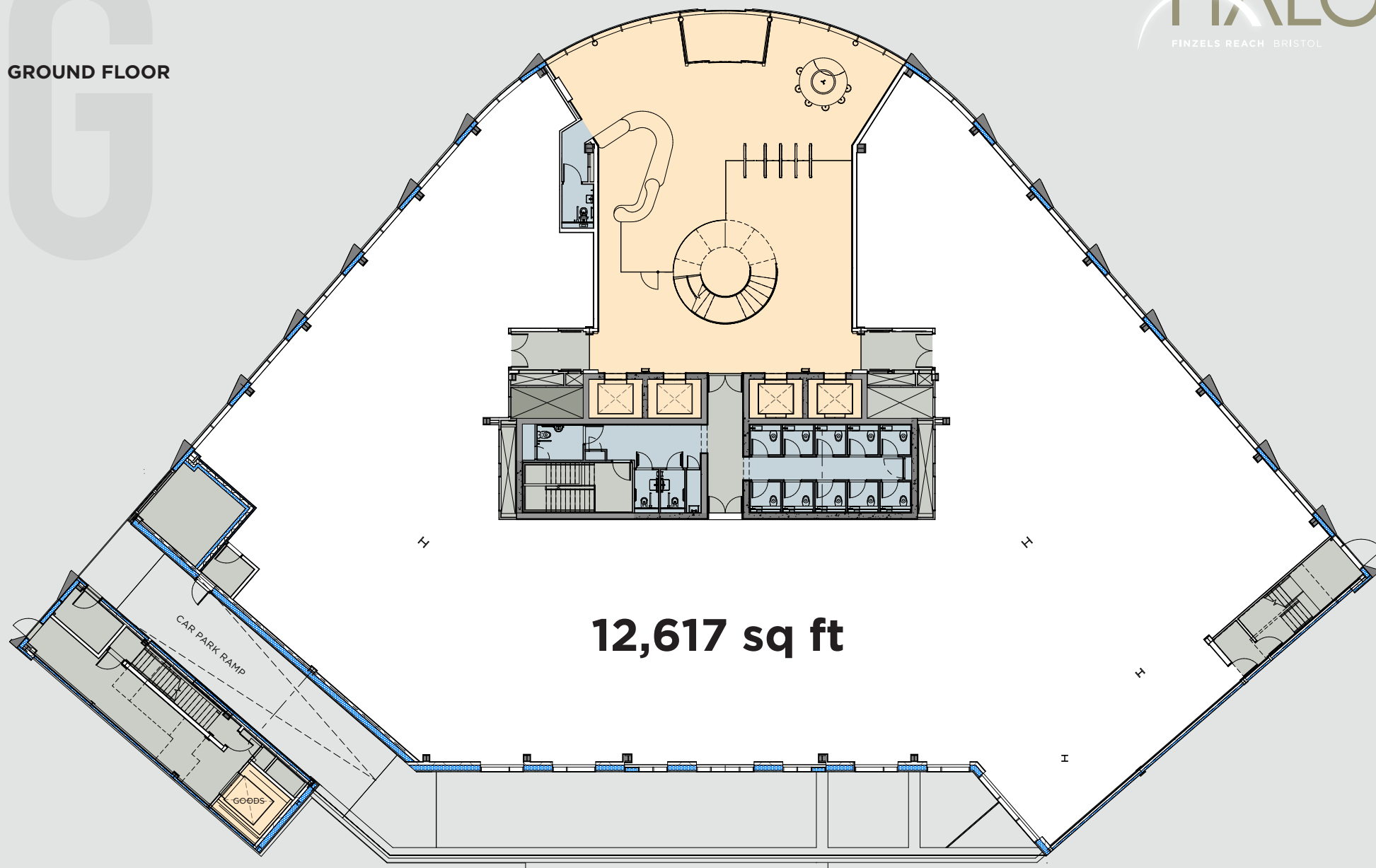
**BASEMENT LEVEL**



G

GROUND FLOOR

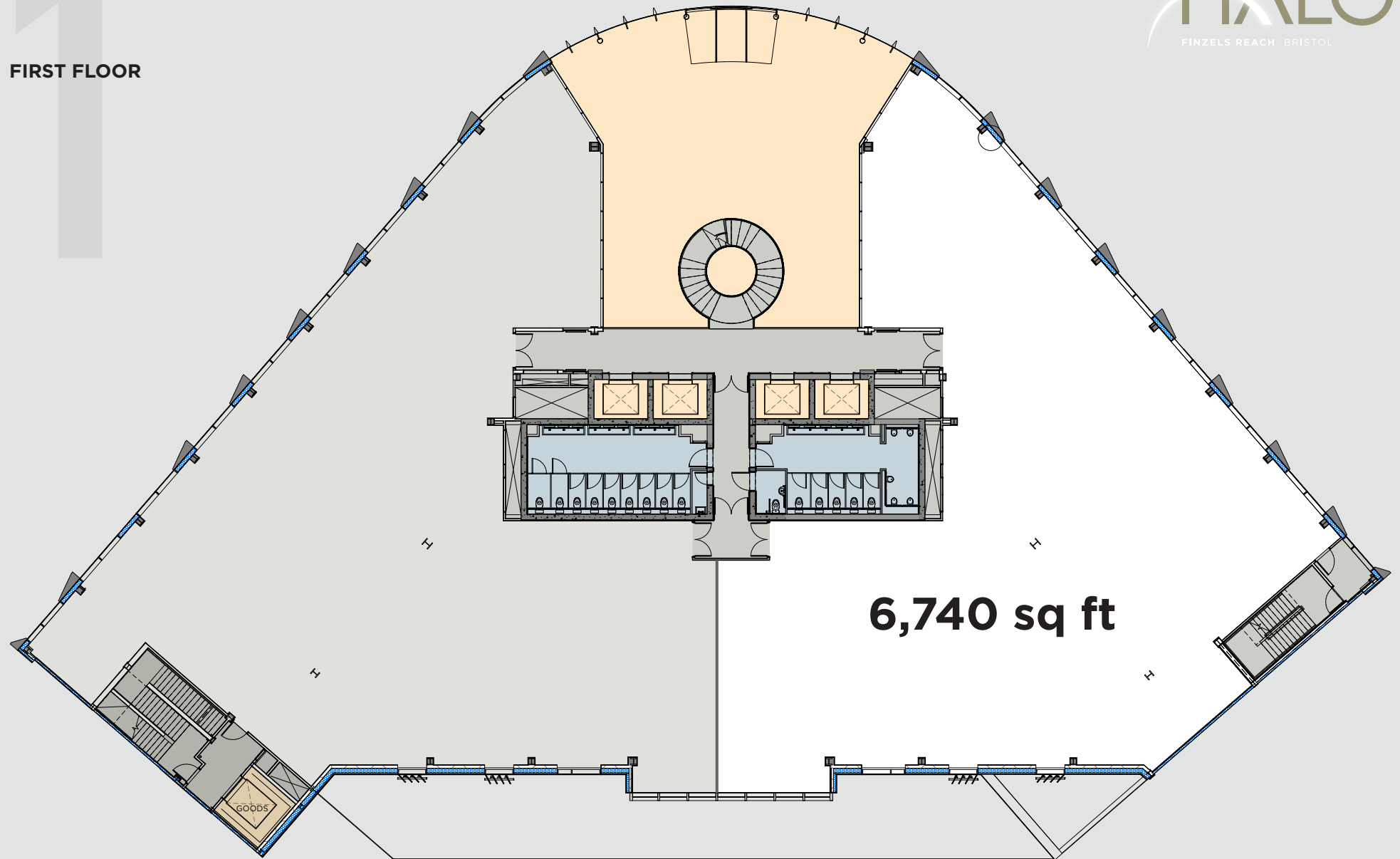
HALO  
FINZELS REACH BRISTOL



1

FIRST FLOOR

HALO  
FINZELS REACH BRISTOL



# SCHEDULE OF ACCOMMODATION

**SCHEDULE** [ Net Lettable / sq ft ]

<b>TOTAL</b>	<b>116,133</b>
--------------	----------------

<b>LEVELS 03-07</b>	<b>73,991</b>
---------------------	---------------

Pre-Let to ● Osborne Clarke

<b>LEVELS 01 (part) &amp; 02</b>	<b>22,785</b>
----------------------------------	---------------

Pre-Let to **Deloitte.**

<b>LEVEL 01 (part)</b>	<b>6,740</b>
------------------------	--------------

<b>GROUND</b>	<b>12,617</b>
---------------	---------------

<b>TOTAL REMAINING</b>	<b>19,357</b>
------------------------	---------------

NB: All areas are approximate and calculated in accordance with the RICS Code of Measuring Practice (6th Edition)





A DEVELOPMENT BY

Cubex.



FIERA  
REAL ESTATE